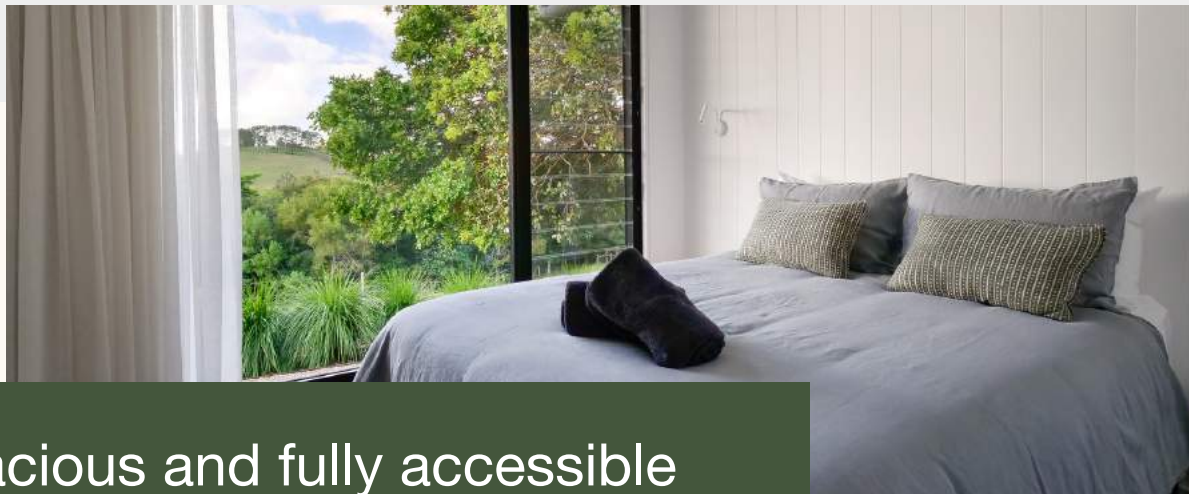


Carinya Byron Bay Luxury Accessible Villa

Our accessible villa, nestled amidst the picturesque Byron Bay hinterlands, welcomes you with a spacious and open-plan design. Inside, you'll find a lounge area, a welcoming dining room, a well-equipped kitchen, a thoughtfully designed accessible bathroom, and two comfortable bedrooms.





Spacious and fully accessible accommodation in Byron Bay.

At Carinya, we are committed to providing every one of our guests with luxury accommodation that meets every one of their needs. That's why we created an accessible villa, thoughtfully designed to be both comfortable and highly functional.

The villa features beautiful timber flooring throughout to allow for easy movement, with plenty of space in every room to manoeuvre. The spacious, contemporary bathroom has smooth tiled flooring, a roll-in shower with a mounted seat, a handheld shower head, grab bars, and a wheelchair-accessible water basin.

The main bedroom has ample space around the comfortable queen bed allowing for easy navigation. This room also features light switches within easy reach of the bedside so you can turn the lights on and off without needing to leave your bed. The second bedroom has two single beds.

There are no steps in the villa, and the kitchen is low set, with the exception of the oven, which is slightly higher than the other features.

Guests can also book an adjacent villa, perfect for traveling companions or carers, if needed.

There are six villas in total, each designed with accessibility in mind. While one villa is fully accessible, our other villas are also thoughtfully crafted to offer a high level of accessibility.

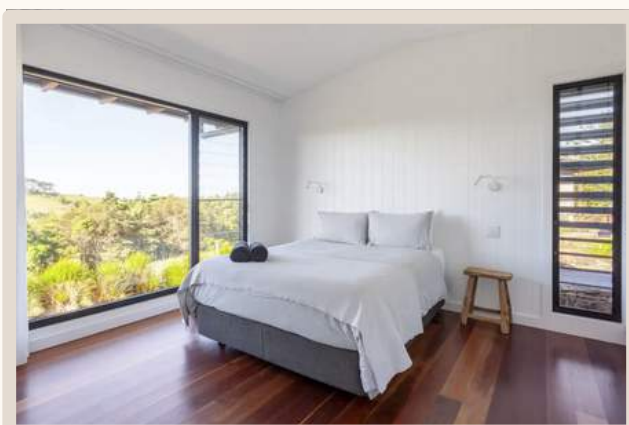




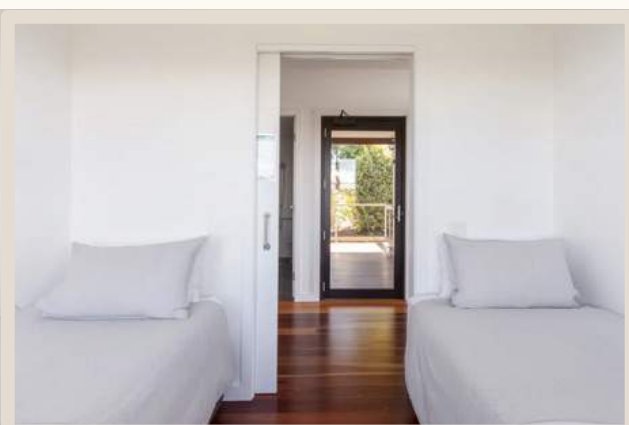
Living & dining room overlooking deck.



Living & dining room.



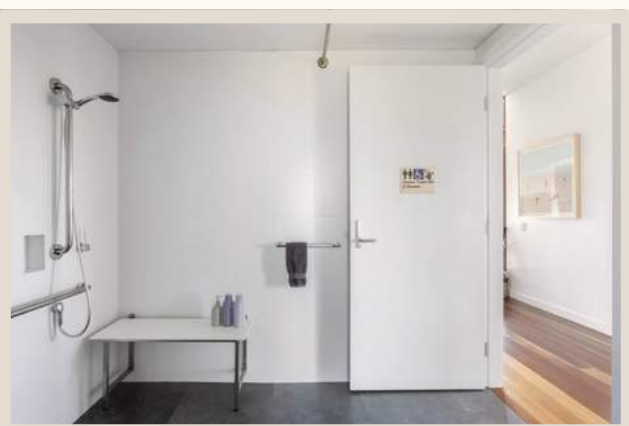
Main bedroom with queen bed.



Second bedroom with single beds.



Kitchen & dining room.



Accessible bathroom.



Exterior of the villa.



Parking spot.

Additional images can be viewed carinyabyronbay.com.au/accessible-villa

Accessible Features

Accessing the property

- There is one parking spot outside the villa and it is 2.4m wide. Additional parking can be accessed if needed.
- Pathway to the front door is over 90cm wide and step free.
- Doors are easy to open and can be opened with one hand.

Door widths

- Property entrance: 86cm
- Main bedroom & second bedroom: 87cm
- Bathroom: 86cm
- Kitchen, dining & living area all open plan
- Hallway width: 160cm

Bedrooms

- Bedrooms are wheelchair accessible.
- Main bedroom has a queen bed and there is space for a mobility aid.
- Light switches are in close reach to the bed in main bedroom.
- Shelves set low so are accessible for storage of clothes.
- Height of the beds is 65cm.
- Bed can be removed in main bedroom if a speciality bed needs to be hired*.
- A hoist is not provided. The space from bed base to floor is 8cm.
- Second bedroom has two single beds.
- There is limited space in the second bedroom for movement between the beds.
- Additional power boards are available for use.

Bathroom

- One bathroom in the villa.
- A wheelchair can glide in and out of the shower
- The shower is open plan and there is no edge on the shower, dimensions are 130x130cm.
- Handheld shower head and grab bars.
- Wall mounted shower chair. Chair can be lifted up out of the way.
- A wheelchair can glide under the washbasin and taps can be turned with one hand.
- Accessible toilet with grab bars and back rest.

Kitchen

- The dishwasher, stovetop, fridge, microwave and sink is accessible from a wheelchair.
- Oven height is a bit too high to be accessed from a wheelchair.

Living Areas & Deck

- There is space for a wheelchair to maneuver in the living room.
- Space for a person in a wheelchair to sit at the dining table and in the living area.
- Raised barrier around edge of deck

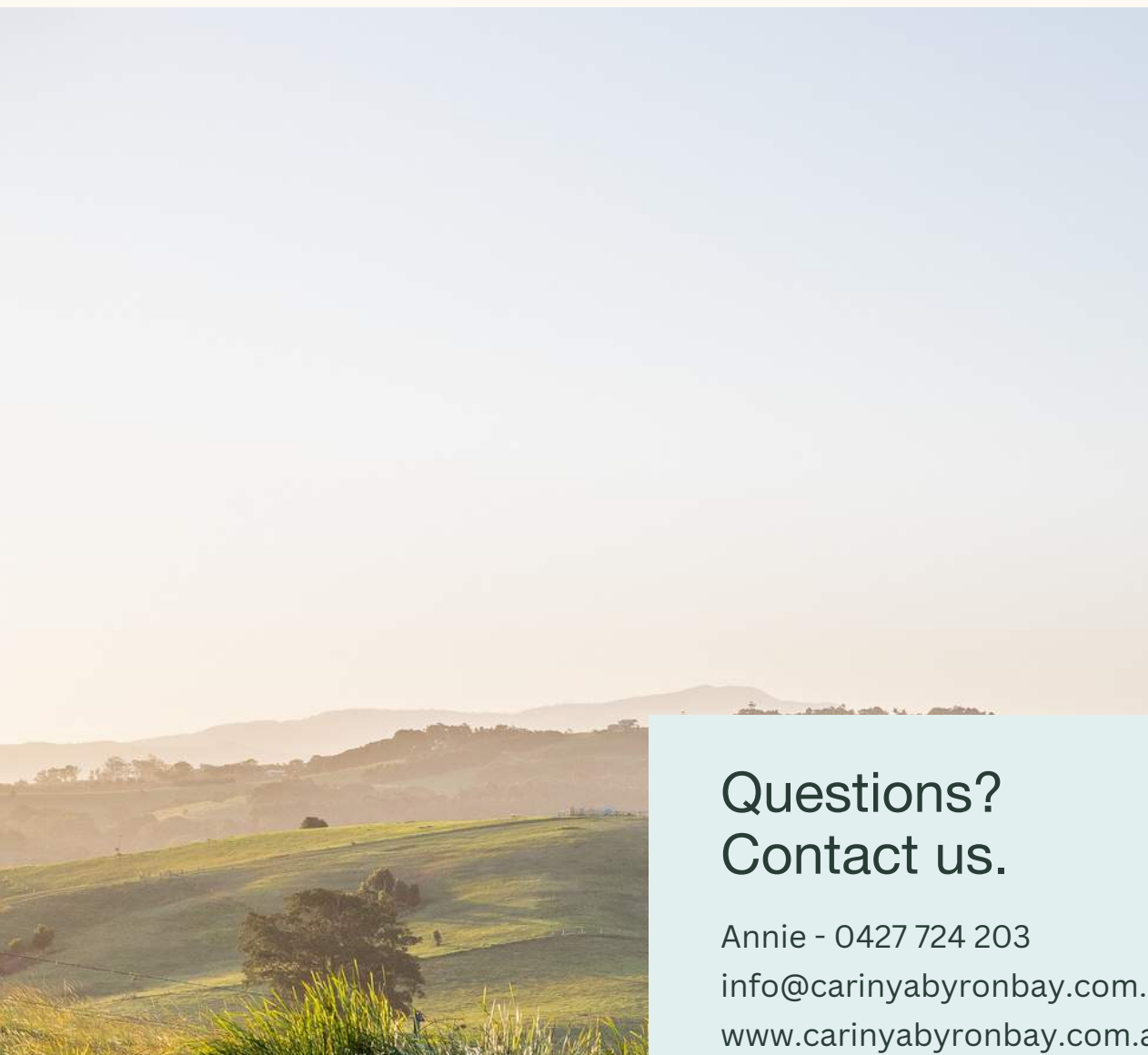
Hiring Equipment

If additional accessible products need to be hired* we recommend the following companies:

[ILS Ballina](#): 44 Bangalow Road, Ballina NSW 2478. P:02 6686 7570

[Ballina Homecare Sales & Hire](#): Shop 12 Ballina BLVD, 70 River St, Ballina NSW 2478. P: 02 6686 4321

* Any hire equipment must be organised and paid for by the guest and a \$150 fee will be charged if we are required to remove any furniture from the villa.



Questions? Contact us.

Annie - 0427 724 203
info@carinyabyronbay.com.au
www.carinyabyronbay.com.au

Carinya Byron Bay
520 Bangalow Road, Talofa

Nestled in the beautiful Arakwal country, our villas are just a short 10-minute drive from the heart of Byron Bay and its pristine beaches. Meanwhile, the charming and historic town of Bangalow is a mere 5 minutes away. Explore the best of both worlds during your stay!

A walkthrough of the villa can be viewed carinyabyronbay.com.au/accessible-villa